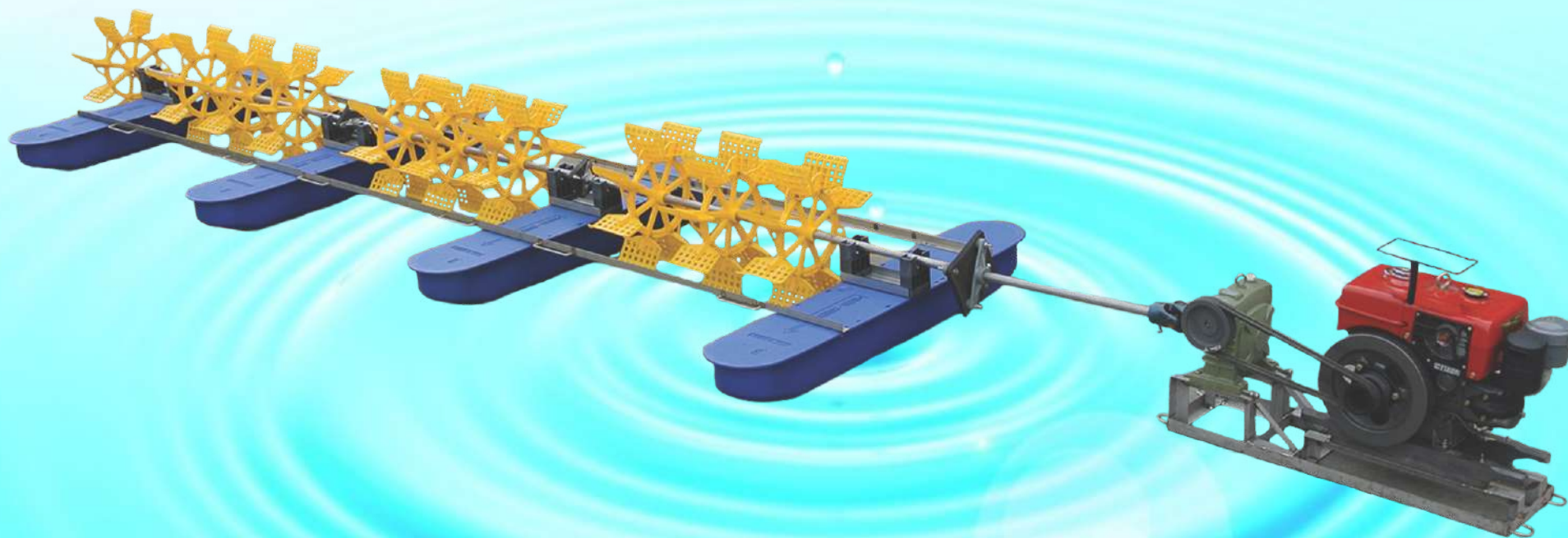


ROMAKUA SHORE TYPE MULTI-IMPELLER PADDLEWHEEL AERATOR



DIESEL ENGINE DRIVEN



MODEL : PA-1210-04

(12HP, 10 x IMPELLER, 4 x FLOATER, CUSTOMIZED)

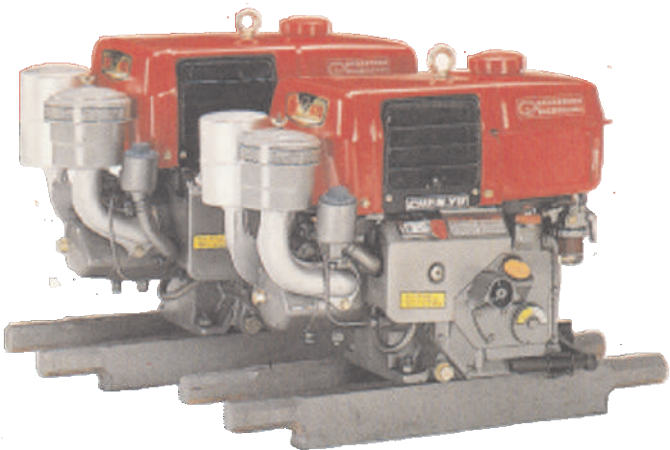


PRODUCT OF HY GROUP
浩洋關係企業榮譽出品

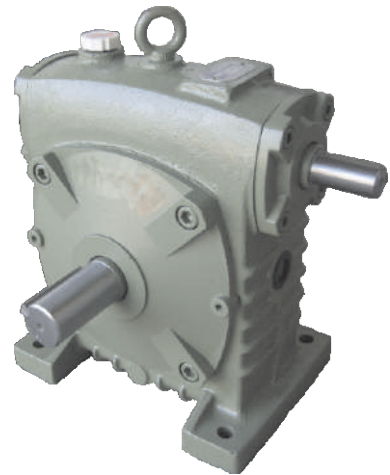
SPECIAL FEATURES :



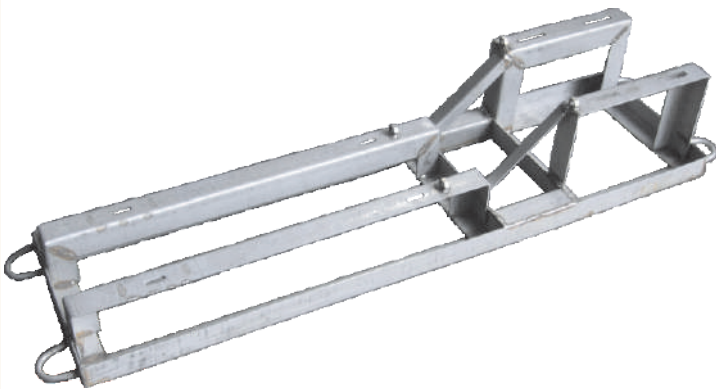
DIESEL ENGINE DRIVEN MODE



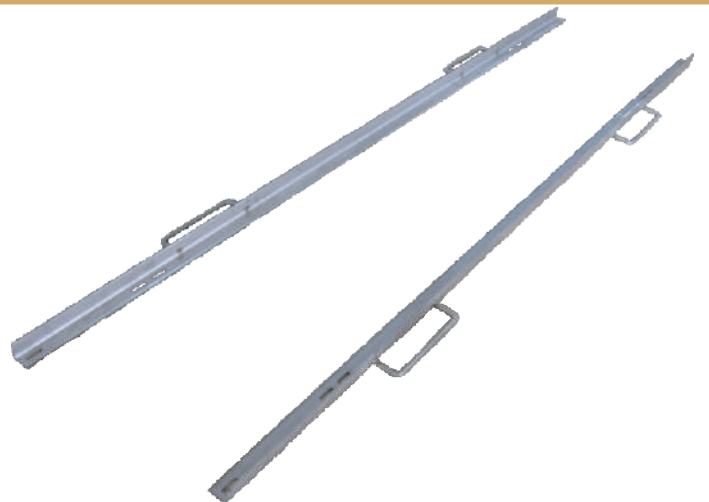
DIESEL ENGINE 8HP, 12HP, 18HP



**INDUTRIAL WORM GEAR REDUCER
TYPE-100, TYPE-120**

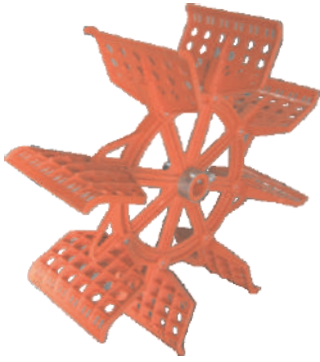


STAINLESS STEEL 304 COMMON BED

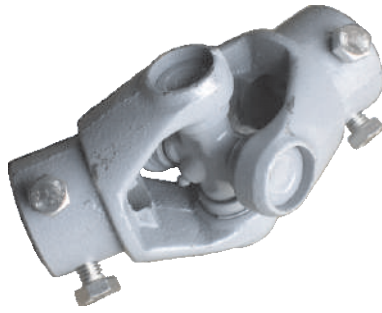


**STAINLESS STEEL L-TYPE BRACING
L2000MM**

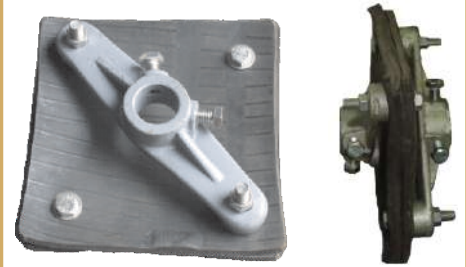
SPECIAL FEATURES :



PLASTIC IMPELLER



GREASED UNIVERSAL JOINT (BANK SIDE)



TRIPLE PAD BIG MOVABLE JOINT (WATER SIDE)



STAINLESS STEEL 304 MOVABLE JOINT (TO CONNECT MAIN DRIVE SHAFT)



HDPE PONTOON FLOATER



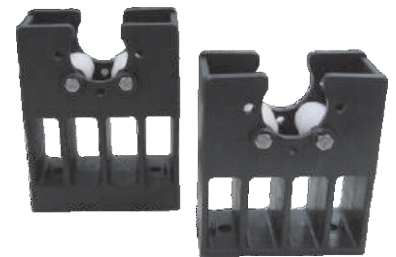
PLASTIC STAND H15MM WITH SS BRACING L320MM



OPTIONAL : ADJUSTABLE PLASTIC BEARING SUPPORTER (U-TYPE)



**SEAMLESS STAINLESS STEEL 304 (SCHEDULE S80) (SOLID PLUS AT BOTH ENDS) INTERMEDIATE DRIVE SHAFT
d 33.4MM x t 4.5MM x L 5.0M**



BIG ROLLER BEARING SUPPORTER (OPEN TOP)



**SEAMLESS STAINLESS STEEL MAIN DRIVE SHAFT d 33.4MM x t 3.4MM
SOLID PLUG AT BOTH ENDS**