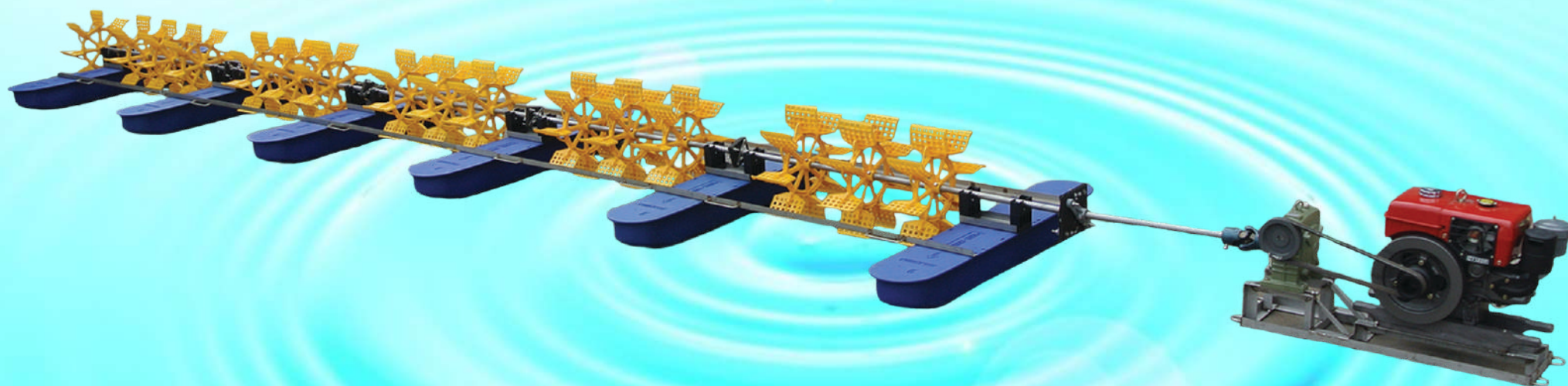


# ROMAKUA SHORE TYPE MULTI-IMPELLER PADDLEWHEEL AERATOR



**DIESEL ENGINE DRIVEN**



**MODEL : PA-1216-06**

(12HP, 16 x IMPELLER, 6 x FLOATER, CUSTOMIZED)

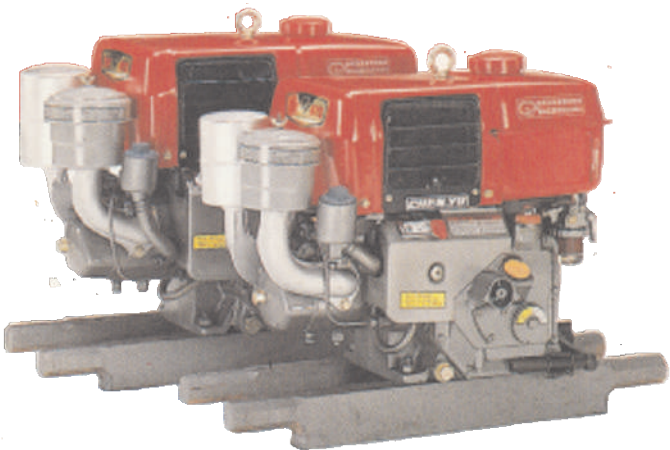


**PRODUCT OF HY GROUP**  
**浩洋關係企業榮譽出品**

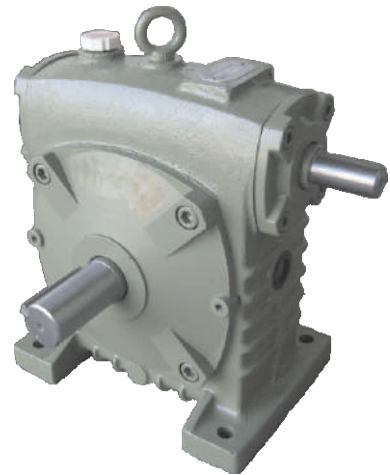
# SPECIAL FEATURES :



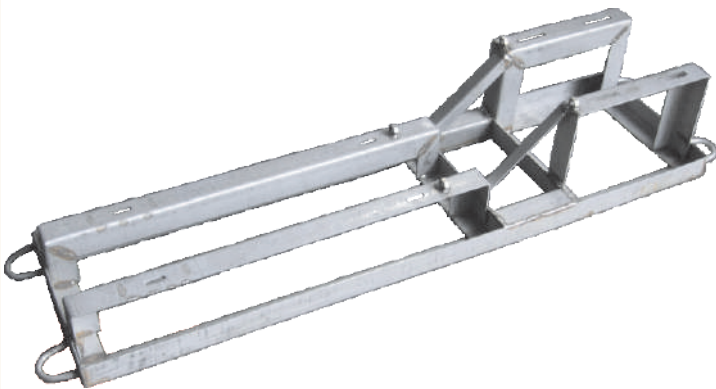
**DIESEL ENGINE DRIVEN MODE**



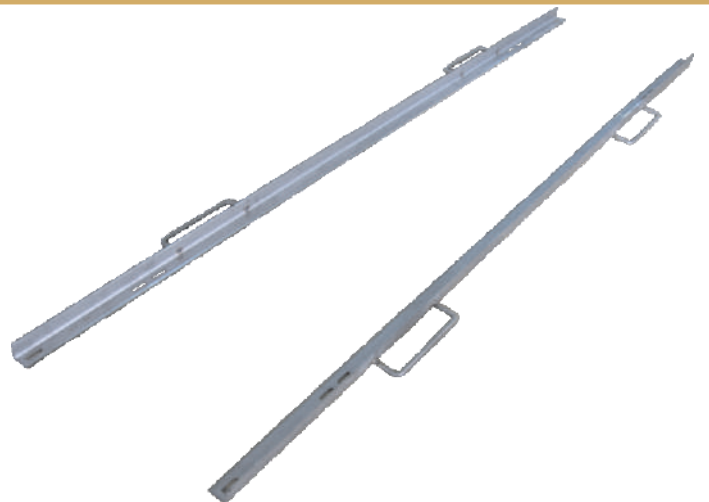
**DIESEL ENGINE 8HP, 12HP, 18HP**



**INDUTRIAL WORM GEAR REDUCER  
TYPE-100, TYPE-120**

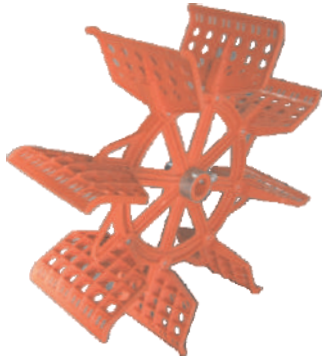


**STAINLESS STEEL 304 COMMON BED**

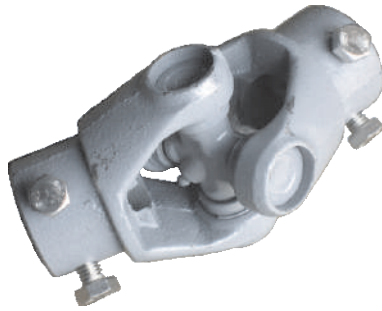


**STAINLESS STEEL L-TYPE BRACING  
L2000MM**

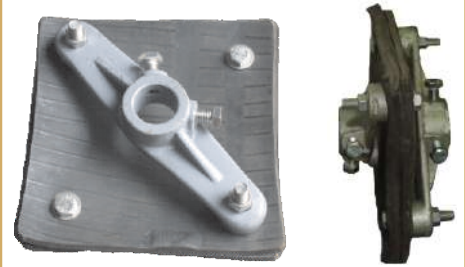
# SPECIAL FEATURES :



**PLASTIC IMPELLER**



**GREASED UNIVERSAL JOINT (BANK SIDE)**



**TRIPLE PAD BIG MOVABLE JOINT (WATER SIDE)**



**STAINLESS STEEL 304 MOVABLE JOINT (TO CONNECT MAIN DRIVE SHAFT)**



**HDPE PONTOON FLOATER**



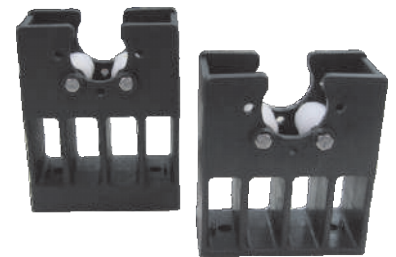
**PLASTIC STAND H15MM WITH SS BRACING L320MM**



**OPTIONAL : ADJUSTABLE PLASTIC BEARING SUPPORTER (U-TYPE)**



**SEAMLESS STAINLESS STEEL 304 (SCHEDULE S80) (SOLID PLUS AT BOTH ENDS) INTERMEDIATE DRIVE SHAFT d 33.4MM x t 4.5MM x L 5.0M**



**BIG ROLLER BEARING SUPPORTER (OPEN TOP)**



**SEAMLESS STAINLESS STEEL MAIN DRIVE SHAFT d 33.4MM x t 3.4MM SOLID PLUG AT BOTH ENDS**